

Monthly Operations Report for April 2025 at KLCU

Operations

	Apr 2025	Apr 2024	Year over Year Change
TRANSITION	23	0	-
TOUCH & GO	83	0	-
TAKEOFF	209	0	-
LANDING	166	0	-
GO AROUND	10	0	-
Totals	561	0	-

NOTE: FLYOVER and TRANSITION are excluded from the total operations count. Operations classified as TOUCH & GO and GO AROUND are counted as two distinct operations, a landing and a takeoff respectively.

Aircraft Type

	Apr 2025	Apr 2024	Year over Year Change
Fixed wing single engine	535	0	-
Fixed wing multi engine	26	0	-

Engine Type

Reciprocating	544	0	-
4 Cycle	17	0	-

Number of Engines

1	535	0	-
2	26	0	-
Unknown			-

Average Daily Operations

Monday	10	0	-
Tuesday	22	0	-
Wednesday	39	0	-
Thursday	22	0	-
Friday	20	0	-
Saturday	13	0	-
Sunday	19	0	-
Average per weekday	23	0	-
Average per weekend	16	0	-

Local vs. Transient

Local	0	0	0.0%
Transient	561	0	0.0%
Nights Stayed	54	0	-

Monthly Operations Report for April 2025 at KLCU

Operations			
	Apr 2025	Apr 2024	Year over Year Change
Seats on Overnight Aircraft	222	0	-
Overnight Visitors @ 50%	111	0	0.0%
Runways			
RWY 09 GO AROUNDs	12	0	-
RWY 09 LANDINGS	53	0	-
RWY 09 TAKEOFFs	66	0	-
RWY 09 TOUCH & GOs	52	0	-
RWY 09 Total	183	0	-
RWY 27 GO AROUNDs	8	0	-
RWY 27 LANDINGS	113	0	-
RWY 27 TAKEOFFs	143	0	-
RWY 27 TOUCH & GOs	114	0	-
RWY 27 Total	378	0	-

Monthly Operations Report for April 2025 at KLCU

	Jan 2024	Jan 2023	Year over Year Change
Weight Class			
CLASS 1	561	0	-
Jet Traffic			
Operations	0	0	-
Largest aircraft			
Average seat count per jet	0	0	-

Most Active Aircraft

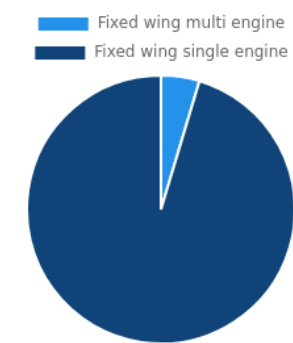
Registration	Manufacturer	Model	Operations	Percentage of Total
N323FS	CESSNA	172P	244	62.9%
N8478U	CESSNA	172F	130	33.5%
N7497T	CESSNA	172A	36	9.3%
N799TE	CESSNA	310P	18	4.6%
N5174Y	CESSNA	T206H	12	3.1%
N6912T	COSTRUZIONI AERONAUTICHE TECNICA	P2006T	8	2.1%
N6358Q	MOONEY	M20F	8	2.1%
N94TB	VANS AIRCRAFT	RV-6	8	2.1%
N7105L	GRUMMAN AMERICAN AVN. CORP.	AA-5	7	1.8%

Most Active Aircraft				
Registration	Manufacturer	Model	Operations	Percentage of Total
N437SP	CESSNA	172S	6	1.5%

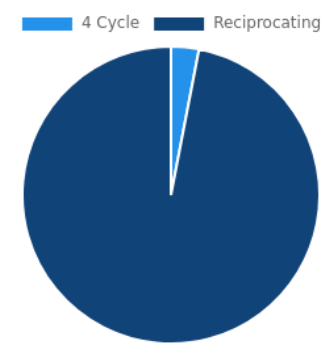
Most Active Owners		
Name	Operations	City
FREDERICKS HALL AVIATION LLC	244	MINERAL
RED OAK AVIATION LLC	130	MINERAL
LEFFLER GREG L	36	ZION CROSSROADS
EASTER JOHN E II	18	BREMO BLUFF
WINGSPAN AVIATION LLC	12	MANASSAS
MID-ATLANTIC AIR VENTURES INC	10	RICHMOND
BIBB KENNETH	8	SAYRE
MARTIN ROBERT L III	8	COVESVILLE
TOLBERT JOHN M	7	JACKSONVILLE BEACH
N437SP LLC	6	MANASSAS

Owner Locations		
City	Operations	Percentage of total
MINERAL	317	81.7%
ZION CROSSROADS	30	7.7%
BREMO BLUFF	17	4.4%
MANASSAS	14	3.6%
RICHMOND	10	2.6%

Aircraft Type

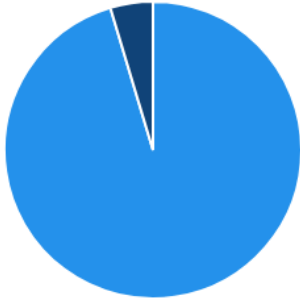


Engine Type



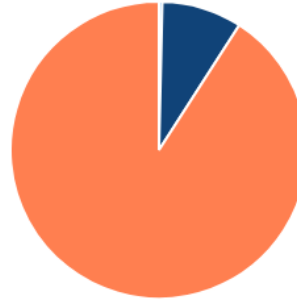
Number of Engines

1 2 Unknown



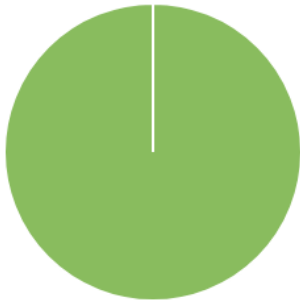
Weather

IFR MVFR VFR



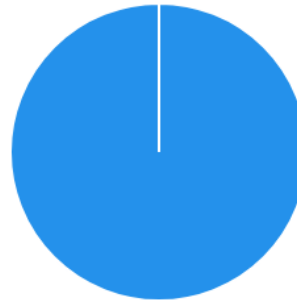
Local/Transient

Local Transient

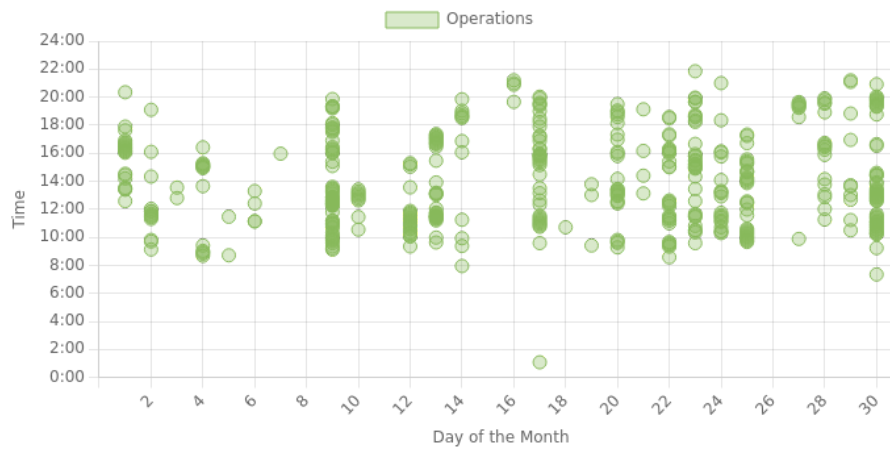


Weight Class

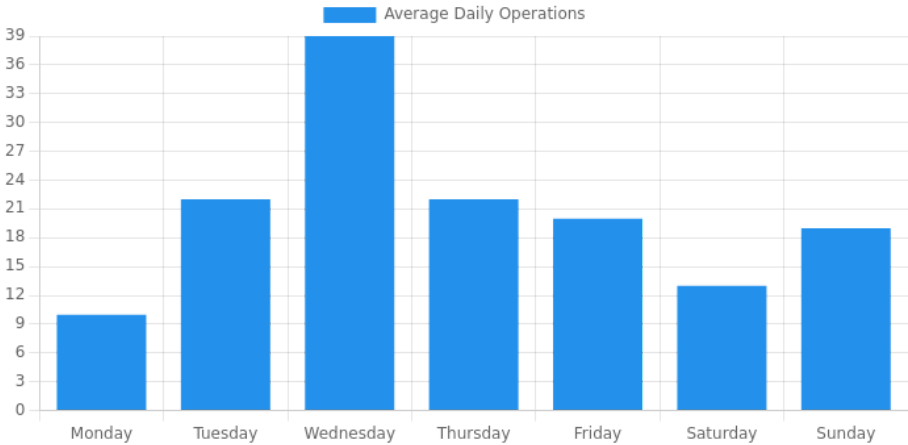
CLASS 1



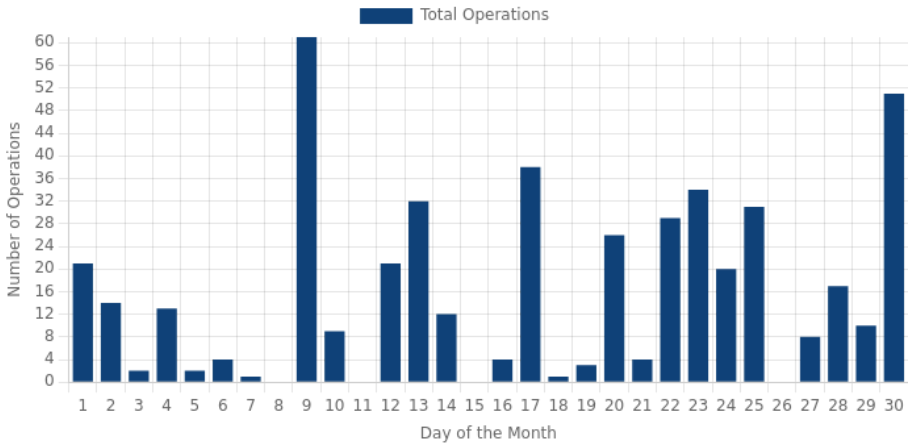
Time of Day



Day of the Week



Daily Operations



Operations by AAC/ADG						
	I	II	III	IV	V	VI
A	561	0	0	0	0	0
B	0	0	0	0	0	0
C	0	0	0	0	0	0
D	0	0	0	0	0	0
E	0	0	0	0	0	0

AAC/ADG Distribution

